

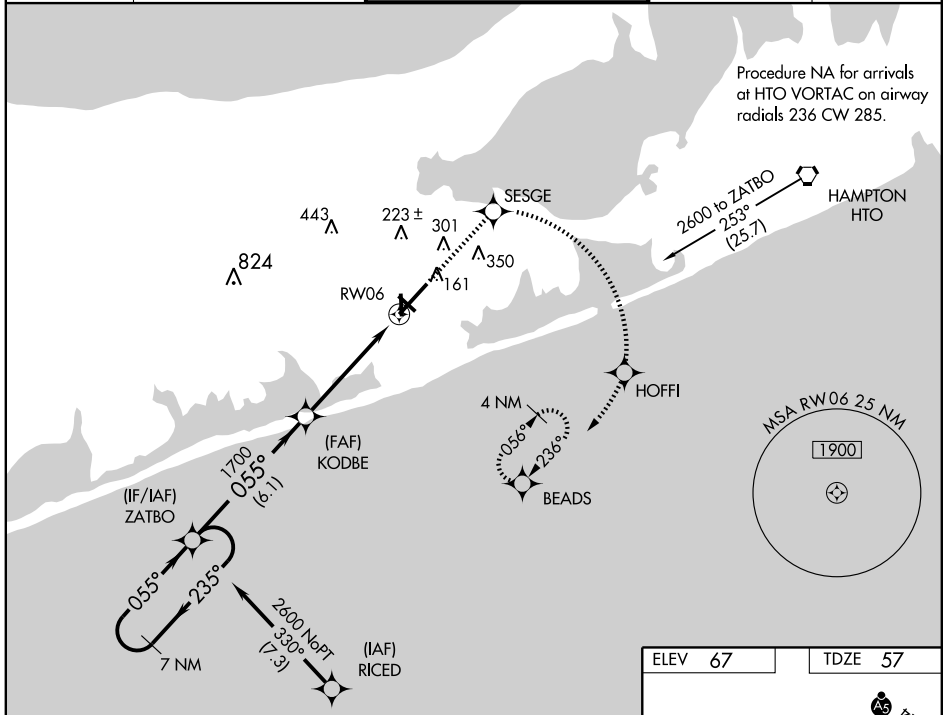
WAAS CH 81822 W06A	APP CRS 055°	Rwy Idg TDZE Apt Elev	9001 57 67
--	------------------------	-----------------------------	---------------------------------------

RNAV (GPS) RWY 6

WESTHAMPTON BEACH/ FRANCIS S. GABRESKI (FOK)

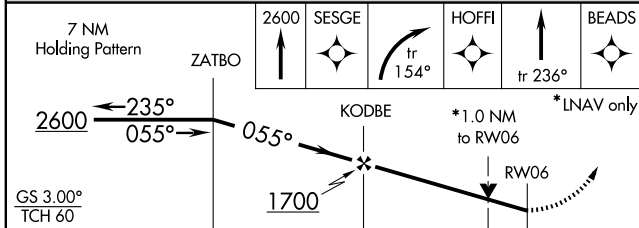
DME/DME RNP-0.3 NA.		MISSED APPROACH: Climb to 2600 direct SESGE and right turn via 154° track to HOFFI and via 236° track to BEADS and hold.		
---------------------	--	--	--	--

ASOS 119.925	NEW YORK APP CON 125.975 343.65	SUFFOLK COUNTY TOWER ★ 125.3 (CTAF) 0 236.6	GND CON 121.8 225.4	UNICOM 122.95
------------------------	---	---	-------------------------------	-------------------------



NE-2, 12 JAN 2012 to 09 FEB 2012

NE-2, 12 JAN 2012 to 09 FEB 2012



ELEV 67	TDZE 57
---------	---------

TWR 145

61

115±

177

0.3% UP 23

HIRL Rwy 6-24 0

MIRL Rwy 15-33 0

REIL Rwy 6, 15, and 33 0