

RNAV (GPS) RWY 24

WESTHAMPTON BEACH/ FRANCIS S. GABRESKI (F'OK)

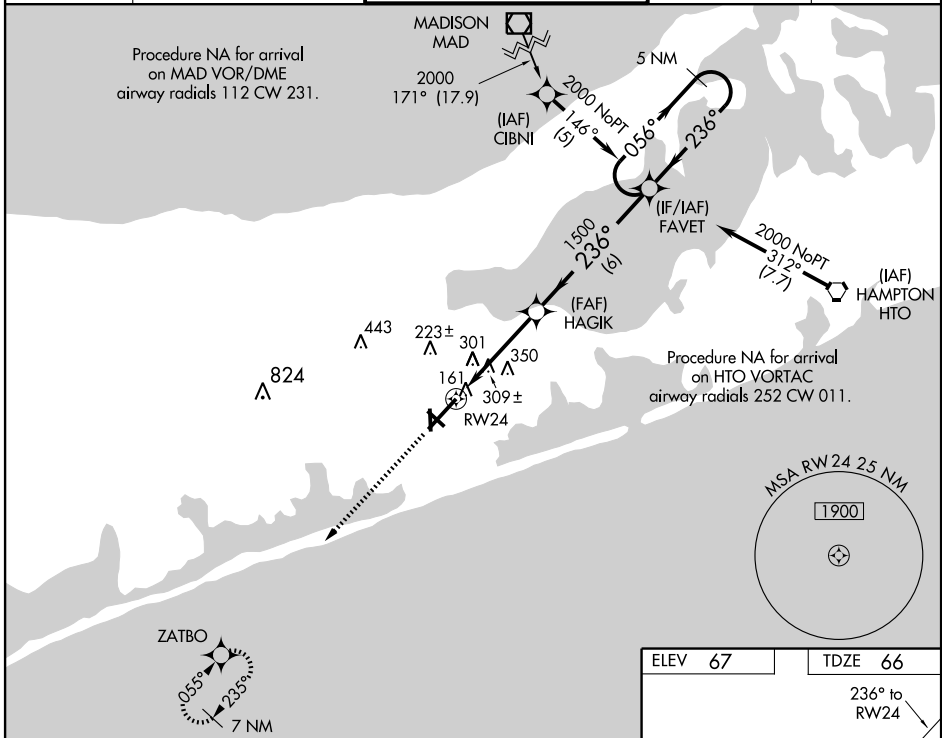
WAAS CH 40009 W24A	APP CRS 236°	Rwy Idg TDZE Apt Elev	9001 66 67
--	------------------------	-----------------------------	---------------------------------------

⚠ If local altimeter setting not received, use Long Island MacArthur altimeter setting and increase all DAs/MDAs 60 feet. VDP and Baro-VNAV NA when using Long Island MacArthur altimeter setting. Baro-VNAV NA below -15°C (5°F). For inoperative MALSR increase LPV visibility to 1 mile all CATs. DME/DME RNP-0.3 NA.



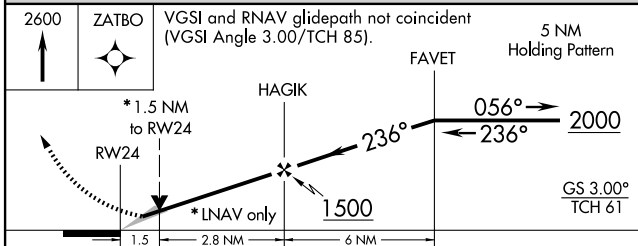
MISSED APPROACH:
Climb to 2600 direct ZATBO and hold.

ASOS 119.925	NEW YORK APP CON 125.975 343.65	SUFFOLK COUNTY TOWER * 125.3 (CTAF) 236.6	GND CON 121.8 225.4	UNICOM 122.95
------------------------	---	---	-------------------------------	-------------------------

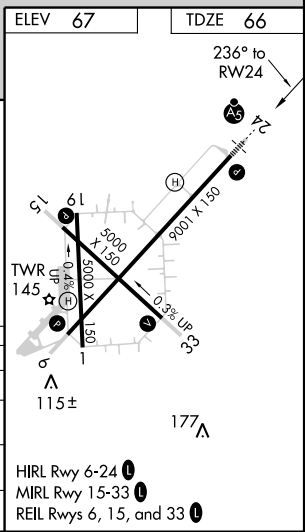


NE-2, 12 JAN 2012 to 09 FEB 2012

NE-2, 12 JAN 2012 to 09 FEB 2012



CATEGORY	A	B	C	D
LPV DA	374-1/2 308 (400-1/2)			
LNAV/VNAV DA	614-1/2 548 (600-1/2)			
LNAV MDA	600-1/2 534 (600-1/2)	600-1 534 (600-1)	600-1 1/4 534 (600-1 1/4)	
CIRCLING	640-2 573 (600-2)			



HIRL Rwy 6-24
MIRL Rwy 15-33
REIL Rws 6, 15, and 33