

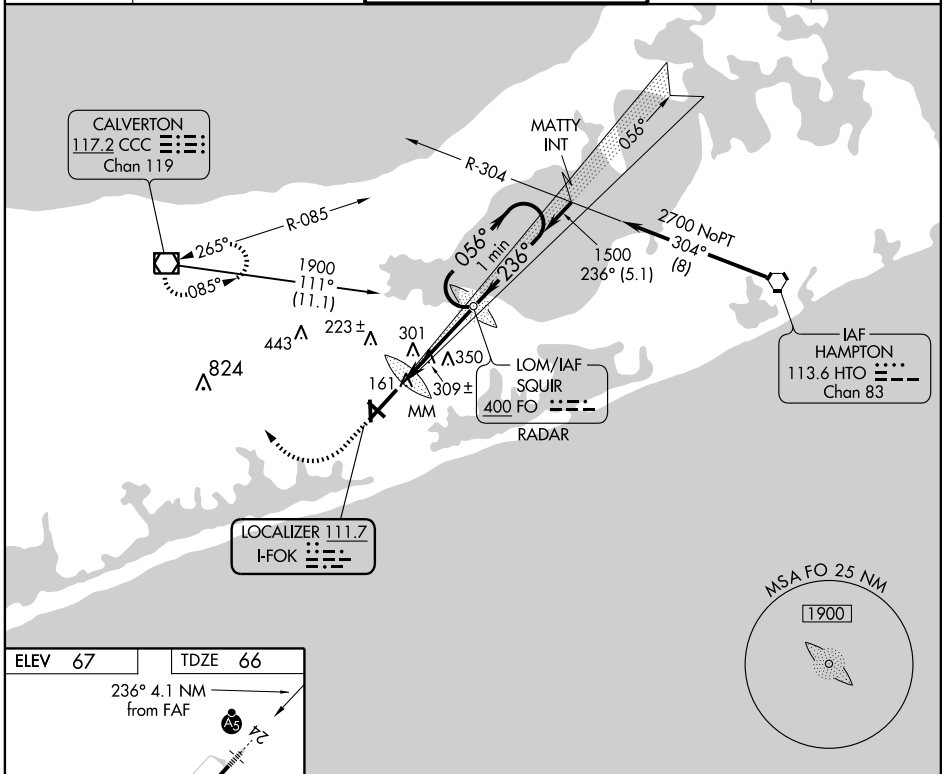
LOC I-FOK <b>111.7</b>	APP CRS <b>236°</b>	Rwy Idg TDZE Apt Elev	<b>9001</b> <b>66</b> <b>67</b>
---------------------------	------------------------	-----------------------------	---------------------------------------

# ILS or LOC RWY 24

WESTHAMPTON BEACH/ FRANCIS S. GABRESKI (FOK)

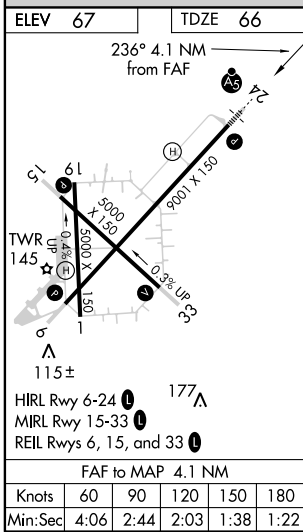
<b>▽</b> <b>△</b>	If local altimeter setting not received, use Long Island MacArthur altimeter setting and increase all DA/MDAs 60 feet.	<b>MALSR</b> 	<b>MISSED APPROACH:</b> Climb to 600 then climbing right turn to 2000 direct CCC VOR/DME and hold.
----------------------	--	------------------	--

ASOS <b>119.925</b>	NEW YORK APP CON <b>125.975 343.65</b>	SUFFOLK COUNTY TOWER ★ <b>125.3 (CTAF) 236.6</b>	GND CON <b>121.8 225.4</b>	UNICOM <b>122.95</b>
------------------------	---	---	-------------------------------	-------------------------



NE-2, 12 JAN 2012 to 09 FEB 2012

NE-2, 12 JAN 2012 to 09 FEB 2012



600	2000	CCC	SQUIR LOM RADAR	One Minute Holding Pattern																				
VGSI and descent angles not coincident (VGSI Angle 3.00/TCH 85). 																								
<table border="1"> <tr> <td>CATEGORY</td> <td>A</td> <td>B</td> <td>C</td> <td>D</td> </tr> <tr> <td>S-ILS 24</td> <td colspan="4">266-½ 200 (200-½)</td> </tr> <tr> <td>S-LOC 24</td> <td>560-½ 494 (500-½)</td> <td>560-¾ 494 (500-¾)</td> <td>560-1 494 (500-1)</td> <td>560-1 494 (500-1)</td> </tr> <tr> <td>CIRCLING</td> <td>600-1 533 (600-1)</td> <td>620-1 553 (600-1)</td> <td>620-1½ 553 (600-1½)</td> <td>640-2 573 (600-2)</td> </tr> </table>					CATEGORY	A	B	C	D	S-ILS 24	266-½ 200 (200-½)				S-LOC 24	560-½ 494 (500-½)	560-¾ 494 (500-¾)	560-1 494 (500-1)	560-1 494 (500-1)	CIRCLING	600-1 533 (600-1)	620-1 553 (600-1)	620-1½ 553 (600-1½)	640-2 573 (600-2)
CATEGORY	A	B	C	D																				
S-ILS 24	266-½ 200 (200-½)																							
S-LOC 24	560-½ 494 (500-½)	560-¾ 494 (500-¾)	560-1 494 (500-1)	560-1 494 (500-1)																				
CIRCLING	600-1 533 (600-1)	620-1 553 (600-1)	620-1½ 553 (600-1½)	640-2 573 (600-2)																				